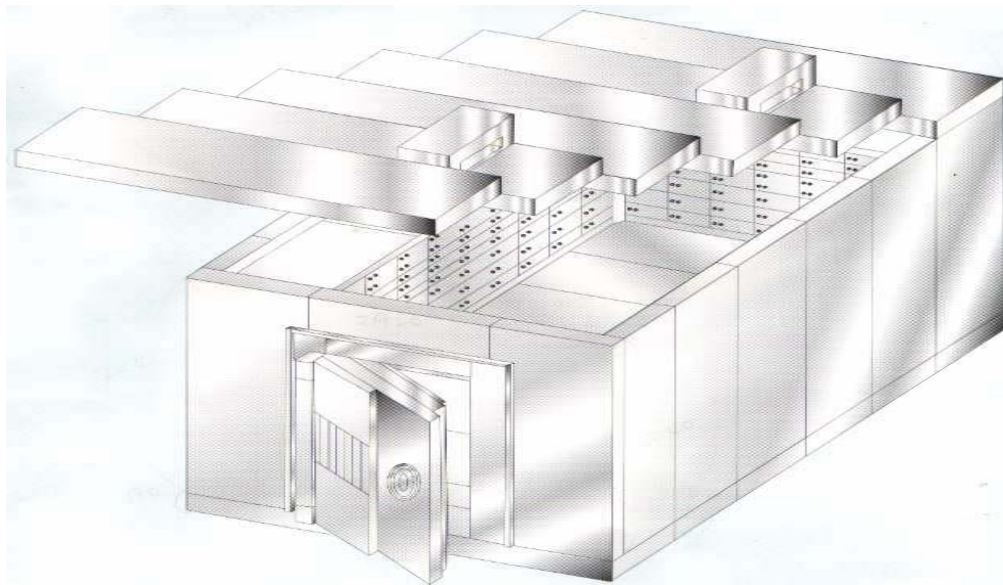




Worldwide Safe and Vault, Inc.
3660 NW 115th Avenue
Miami, FL 33178 USA

**Worldwide Safe and Vault introduces our
UL Listed Modular Tempervault (TM) Panels.....**
the thinnest vault panels in the industry !



Worldwide's new light-weight vault panels are constructed of technically innovative materials that include high strength, tempered concrete, metal fibers, reinforcing rods and steel pans. Our panels offer increased flexibility while providing a product that will stand the test of time. The extremely durable nature of our panel will eliminate the deterioration problem that occurs with other panels constructed, in part, of organic materials. All this and the thinnest panels in the industry to be UL listed!

The need for light-weight vault panels...

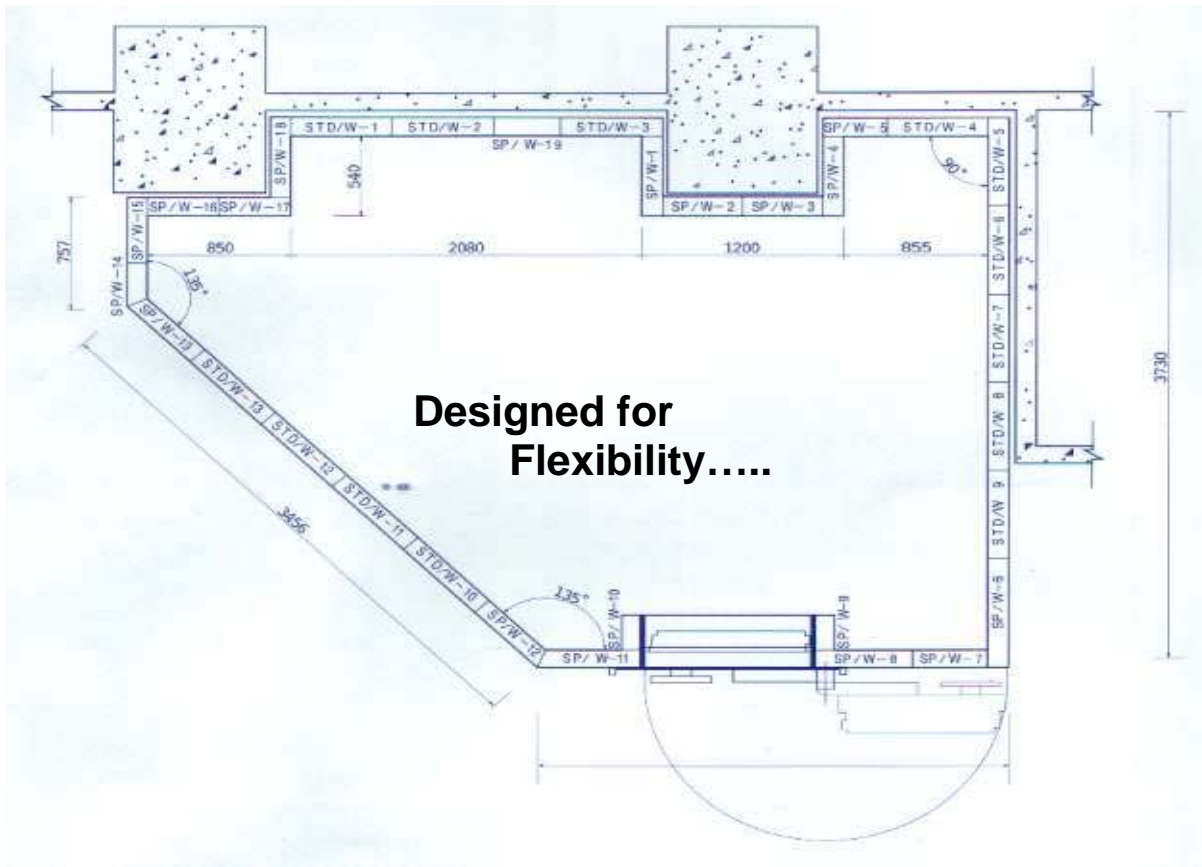
Not all vaults can be conveniently constructed on the ground floor of a building. In situations where a vault is required for the upper levels, the weight of the vault becomes a major consideration. Manufacturers have typically used a core of hardwood in their panels in order to reduce the weight of the product. The problem with the use of wood is that it is an organic material and will, over time, begin to decay. As the wood deteriorates, the structural integrity of the vault comes into question. Over the long term, the quality of any wood based vault panel cannot be guaranteed. Structural stability and resistance to penetration will deteriorate as the age of the vault increases.

Thin is in...

Worldwide's use of technically innovative materials has produced the thinnest panels ever to receive an Underwriters Laboratory listing. Our Class 1 panels are 2 ¼ inches thick, our Class 2 panels are 3 ½ inches thick and our Class 3 are 6 ¼ inches thick. The total weight of the vault will be drastically reduced because the panels are thinner. In addition, the panels will test to an impressive compressive strength approaching 44,000 psi. Thinner panels will result in a reduced vault footprint and installations will be more cost effective as thinner panels are easier to handle and assembly time will be reduced.

Flexible in design...

On design configurations, we can be extremely flexible. Vaults of almost any size can be constructed. Standard size panels are used whenever possible and panels of alternate sizes produced to provide the exact dimension required to meet the specific measurement of the vault under consideration. The vault door and HVAC port(s) can be placed in virtually any location. New panels can be used to retrofit older vaults or other existing structures in order to increase the level of protection.



Benefits of the new Worldwide modular tempered vault panels...

Thin

- more usable space due to smaller footprint
- retrofit existing vaults/structures to upgrade security
- increases the range of possible vault designs

Light

- use on upper-level floors
- installations are quicker and more cost effective
- reduced transportation costs to site

Dense

- resistance against attacks increased
- provides the highest level of security

Durable

- materials will not deteriorate
- integrity of vault will be maintained

PRODUCT SPECIFICATIONS

U.L. Burglary Class	Thickness	Pounds per square foot
Class 1	2 ¼"	35
Class 2	3 ½"	49
Class 3	6 ¼"	88

UL Class 1 – withstands a 30 minute forced entry attack performance test
UL Class 2 – withstands a 60 minute forced entry attack performance test
UL Class 3 – withstands a 120 minute forced entry attack performance test

Construction

Extreme, high strength, tempered concrete
Comprehensive strength approaching 44,000 psi
Reinforcing Rods set in a grid pattern welded to vault pan
Steel pan forms the interior side of panel

Product Configurations

UL Class 1 Five Sided
 Six Sided
UL Class 2 Five Sided
 Six Sided
UL Class 3 Five Sided
 Six Sided

Installation Options

Welded Model or Bolted Model

Worldwide Safe & Vault, Inc.

3660 N.W. 115th Avenue, Miami, Florida 33178 USA

Nationwide Toll Free: 800-932-2278

Local: 305-477-9266 * Fax: 305-477-9744

www.worldwidesafe.com

info@worldwidesafe.com