



Setting the Standard

VSI's innovations provide ease of operation – with drive-up and walk-up convenience. The Model 2001 meets or exceeds Underwriters Laboratory's stringent standards for safety and protection and are listed under the U.L. 771 standard.

Features include a counter weighted access door that opens and closes easily. Additionally, the door handle is designed and positioned for easy access by drive-up customers. The units may be conveniently placed to meet ADA accessibility standards.

A special hopper design insures an unrestricted path for deposits into the receiving chest when the unit is installed for drive-up use. VSI offers chests to meet your particular needs.

The Model 2001 provides product reliability, not found on other manually operated bag and envelope night depositories. Should service be required, it can be performed easily by a single technician, without the need for lifting equipment.



Dimensions Model 2001

Bag Opening 6" H x 12 3/4" W x 9 1/2" D

Envelope Opening 1 5/8" H x 12 3/4" W x 9 1/4" D

Forms Holder 2 1/4" H x 12" W x 4 1/2" D

Night Depository Head Model 2001

Features

VSI's manually operated U.L. listed night depository meets or exceeds U.L. standard 771 for after hour deposits of cash and currency – properly installed with acceptable chest and alarm protection.

Exterior depository face finished in high grade stainless steel. The standard interior shroud is 3/16" steel. A 1" steel shroud is available.

Bag opening secured by heavy duty corrugated, pin tumbler lock. U.L. listed. The key is not removable until the hopper is closed and locked.

Envelope deposit is made without the need of a key. Deposit hopper partially opens exposing a 12 3/4" x 1 5/8" slot.

Special hopper design insures positive movement of deposit into the receiving safe.

Key operation opens hopper to accept 10 1/2" x 7 1/2" bags.

A lighted depository sign illuminates the exterior face and deposit compartment.

Convenient forms compartments.

Options

1" Steel Shroud

Matching Depository Keys to Other Heads

Receiving Chests

Master Keyed Depository Bags

Manufacturer reserves the right to change product specifications without notice.

Worldwide Safe & Vault, Inc.

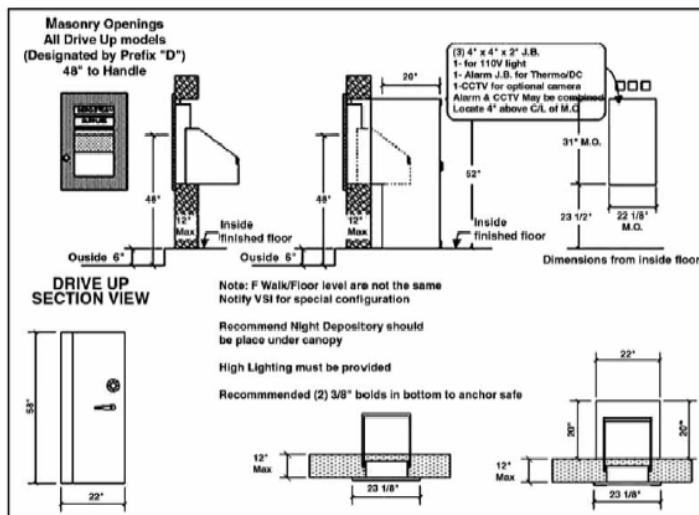
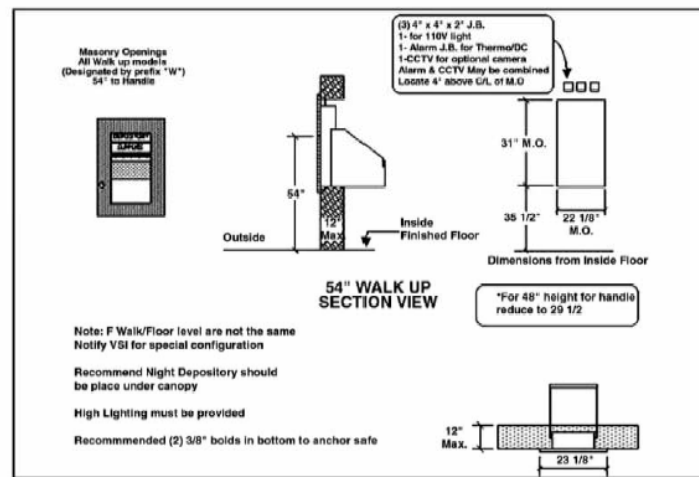
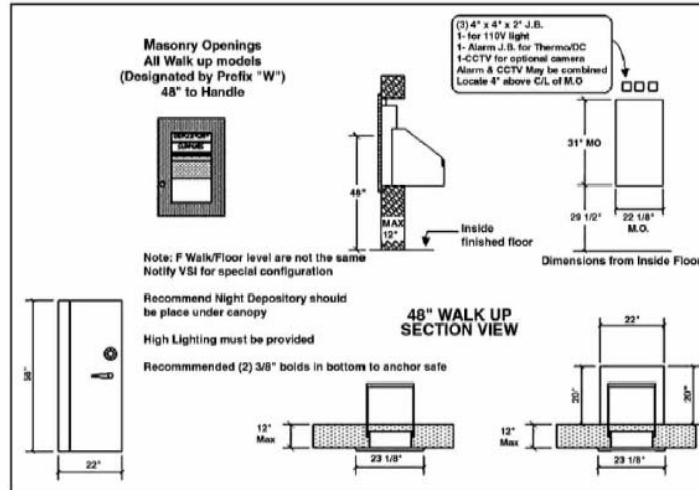
3660 N.W. 115th Avenue, Miami, Florida 33178 USA

Nationwide Toll Free: 800-932-2278

Local: 305-477-9266 * Fax: 305-477-9744

www.worldwidesafe.com

info@worldwidesafe.com



Worldwide Safe & Vault, Inc.

3660 N.W. 115th Avenue, Miami, Florida 33178 USA

Nationwide Toll Free: 800-932-2278

Local: 305-477-9266 * Fax: 305-477-9744

www.worldwidesafe.com

info@worldwidesafe.com